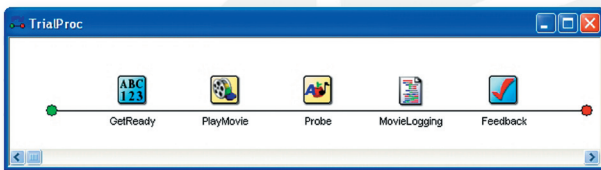




## The Most Comprehensive Software Available for Behavioral Research

### What is E-Prime®?

E-Prime is a suite of applications used to design, generate, and run computerized behavioral experiments. Build your own experiments using E-Prime's graphical interface. Collect, edit and analyze data – all within a few hours! Present stimuli and collect responses with millisecond precision.



### Make the Right Choice with E-Prime® Professional

*Extends E-Prime® 2.0 Standard to offer enhanced capabilities for more sophisticated designs*

**E-Prime® 2.0 Professional** builds upon the new features included in E-Prime® 2.0 Standard to offer enhanced features:

- Present stimuli on multiple monitors simultaneously
- Play multiple movies simultaneously
- Improved productivity tools to test and debug (AutoAnswer, Experiment Advisor scripting aides)
- Set experiment-wide object properties and defaults
- Multiple correct answers
- Create custom libraries of shared functions through package files
- Network concurrent licenses


### What's new for 2.0?

- Enhanced graphical interface
- Ability to play digital movies as stimuli (MPEG, AVI, WMV)
- Copy & paste objects between experiments
- Digital recording of participant vocalizations
- Increased display speed for bitmap transfers
- Support for additional image formats
- Improved options for network or ghosting installations
- Support for presentation of stimuli on multiple video displays
- Display stimuli on any attached monitor
- Improved audio support
- Support for UNICODE and international fonts
- Support for new devices (Joystick, Parallel Port Device, Network Socket Device)
- Expanded support for larger scripts
- Improved documentation and indexing of online Help
- A comprehensive scripting language
- Professional version with additional capabilities

## NOW AVAILABLE!

**E-Prime® 2.0 Standard Release Candidate and E-Prime® 2.0 Professional Release Candidate**

To obtain your quote contact us at [sales@pstnet.com](mailto:sales@pstnet.com)

 **PSYCHOLOGY SOFTWARE TOOLS**  
Solutions for Research, Assessment, and Education  
311 23rd Street Extension Suite 200  
Sharpsburg, PA 15215-2821 USA  
Phone: 412.449.0078  
Fax: 412.449.0079  
E-mail: [sales@pstnet.com](mailto:sales@pstnet.com)  
Web: [www.pstnet.com](http://www.pstnet.com)

# E-Prime 2

## How much does E-Prime® cost?

The listed prices are provided in US funds and do not include the cost of shipping and handling. Prices are subject to change without notice.

### Single Licensing Options:

E-Prime 2.0 Standard	<b>\$795</b>
E-Prime 2.0 Professional	<b>\$995</b>
E-Prime 2.0 Run-Time License	<b>\$125</b>

### Network Licensing Options:

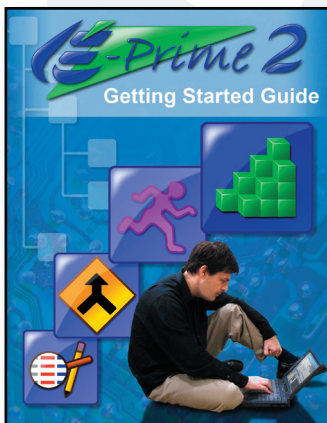
Network License (10 seat min.)	<b>\$796</b> per concurrent seat
-----------------------------------	--

### Upgrades:\*

E-Prime 1.x to E-Prime 2.0 Standard	<b>\$495</b>
E-Prime 1.x/2.0 Standard to E-Prime 2.0 Professional	<b>\$595</b>

Multi-Pack to Network License	<b>Contact us</b>
Site License to Network License	<b>for a quote</b>

\*Requires previous purchase of a full E-Prime® system. A valid E-Prime® serial number must be provided at the time of purchase. An E-Prime® license key is also required for installation.



## What operating systems support E-Prime®?

E-Prime is compatible with Microsoft® Windows XP® SP3 and Vista® SP1

*-E-Prime Device Drivers are not supported for Windows® XP 64 and Windows® Vista 64 at this time. Windows® Vista requires installing the E-Prime Device Drivers separately.*

## What are the minimum and recommended machine requirements for E-Prime®?

### Minimum

- 1 Ghz Pentium Processor
- 512 MB RAM
- PCI DirectX™ video card with 32 MB RAM
- PCI DirectX™ sound card
- CD-ROM
- USB Port

### Recommended

- 2 Ghz Pentium DualCore Processor or higher
- 1 GB RAM or higher
- 8X AGP or PCI Express DirectX™ video card with 128 MB RAM or higher
- Current generation Sound Blaster sound card
- CD-ROM
- USB Port
- Internet connection

*-Serial Port or Compatible USB to Serial Converter is required for use with the PST Serial Response Box*

*-Dual/Quad Core CPU system recommended for time critical movie stimulus paradigms.*

## Can I install E-Prime® 2.0 if I currently have E-Prime® 1.x installed?

Yes. E-Prime 2.0 will support what is known as a "side-by-side" installation where both E-Prime 1.x and E-Prime 2.0 can be on the system at the same time. Experiment files can be upgraded from E-Prime 1.x to E-Prime 2.0, but once converted to the E-Prime 2.0 format (.es2), the experiments cannot be accessed through the E-Prime 1.x system. When converting experiments, E-Prime 2.0 will copy your original E-Prime 1.x file (.es) so that you can continue to access the original in E-Prime 1.x.

## Will E-Prime® 1.x experiments be compatible with E-Prime® 2.0?

Yes. Most E-Prime 1.x experiments will upgrade into E-Prime 2.0 without error or significant modifications. Once an experiment is upgraded into E-Prime 2.0 (.es2) it will no longer be accessible in E-Prime 1.x (.es). Experiments created or upgraded to E-Prime 2.0 will have the file extension .es2, whereas experiments created in E-Prime 1.x will have the .es file extension.

 **PSYCHOLOGY SOFTWARE TOOLS**  
Solutions for Research, Assessment, and Education

311 23rd Street Extension  
Suite 200  
Sharpsburg, PA 15215-2821  
USA

Phone: 412.449.0078  
Fax: 412.449.0079  
E-mail: sales@pstnet.com  
Web: www.pstnet.com